

# GENERAL SPECIFICATIONS

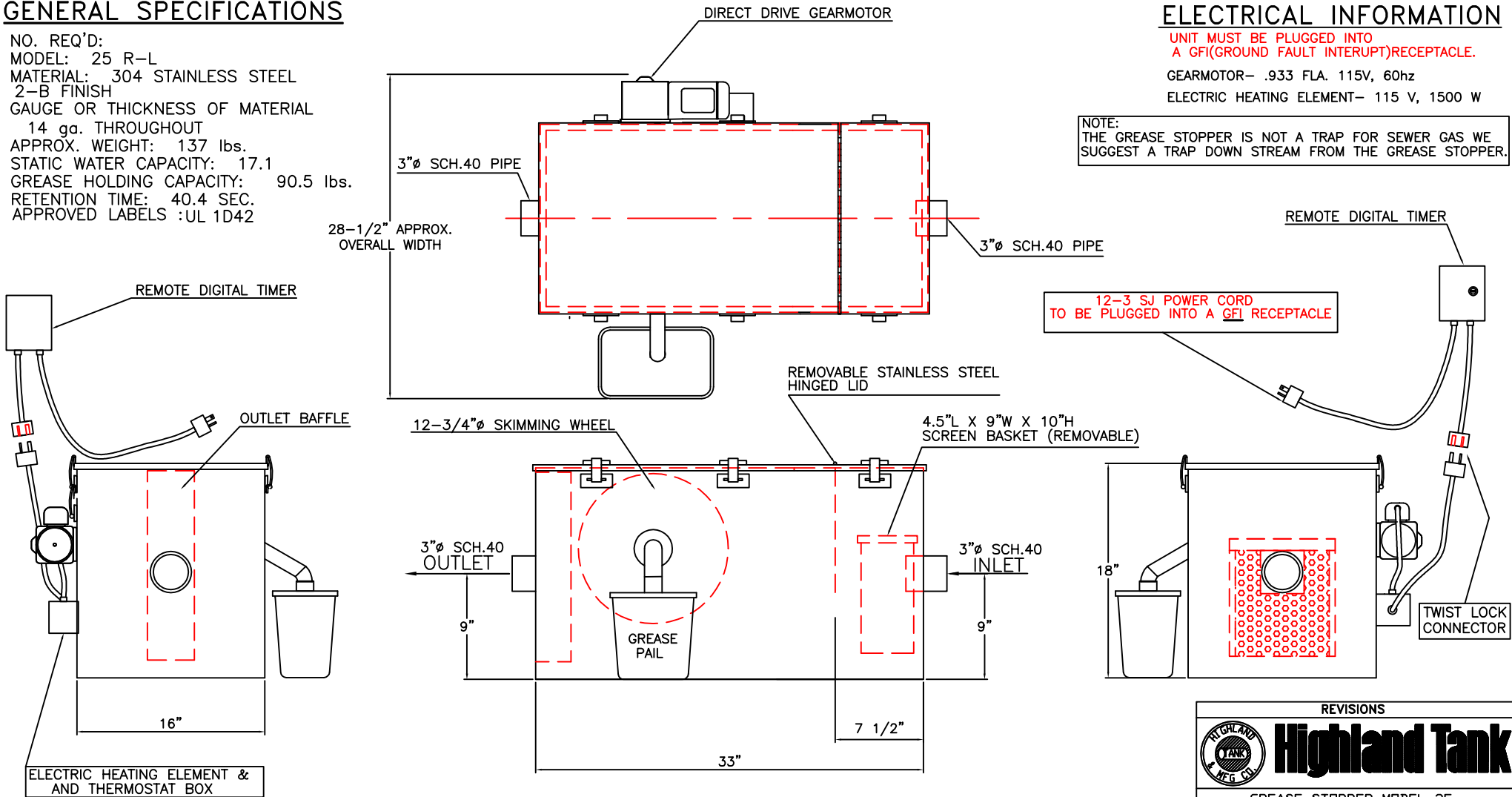
NO. REQ'D:  
 MODEL: 25 R-L  
 MATERIAL: 304 STAINLESS STEEL  
 2-B FINISH  
 GAUGE OR THICKNESS OF MATERIAL  
 14 ga. THROUGHOUT  
 APPROX. WEIGHT: 137 lbs.  
 STATIC WATER CAPACITY: 17.1  
 GREASE HOLDING CAPACITY: 90.5 lbs.  
 RETENTION TIME: 40.4 SEC.  
 APPROVED LABELS :UL 1D42


# ELECTRICAL INFORMATION

UNIT MUST BE PLUGGED INTO  
 A GFI(GROUND FAULT INTERRUPT)RECEPTACLE.

GEARMOTOR- .933 FLA. 115V, 60hz  
 ELECTRIC HEATING ELEMENT- 115 V, 1500 W

NOTE:  
 THE GREASE STOPPER IS NOT A TRAP FOR SEWER GAS WE  
 SUGGEST A TRAP DOWN STREAM FROM THE GREASE STOPPER.



REVISIONS				
		<h1>Highland Tank</h1>		
GREASE STOPPER MODEL 25				
R-L				
CUSTOMER:				
PROJECT:				
QUOTE NO:				
SCALE:	DATE:	DWG. BY:	CHK'D BY:	DWG. NO.:
1-1/2"=1'-0"	11/28/06	CLD		GS25R-L