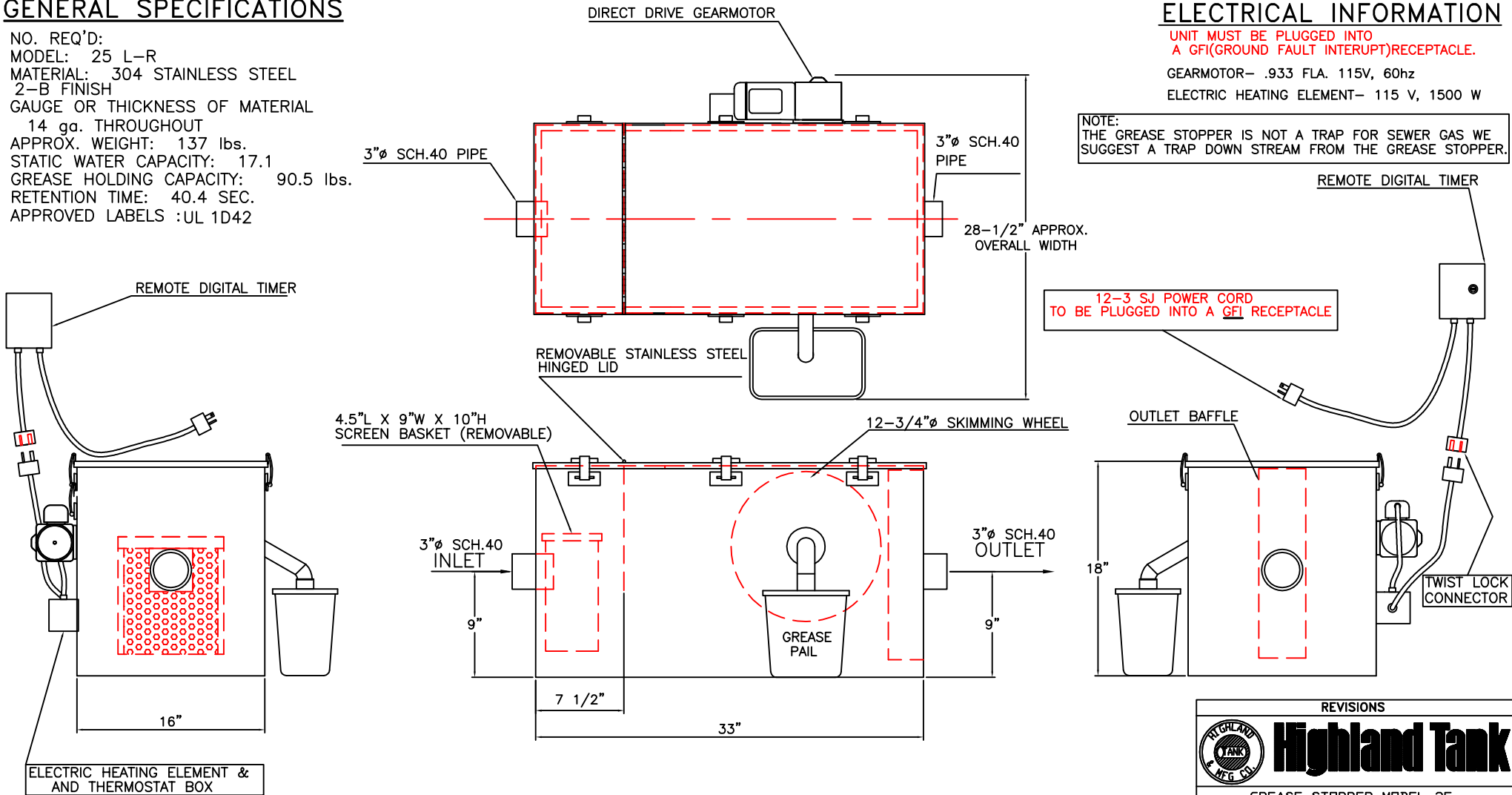


GENERAL SPECIFICATIONS

NO. REQ'D:
 MODEL: 25 L-R
 MATERIAL: 304 STAINLESS STEEL
 2-B FINISH
 GAUGE OR THICKNESS OF MATERIAL
 14 ga. THROUGHOUT
 APPROX. WEIGHT: 137 lbs.
 STATIC WATER CAPACITY: 17.1
 GREASE HOLDING CAPACITY: 90.5 lbs.
 RETENTION TIME: 40.4 SEC.
 APPROVED LABELS :UL 1D42



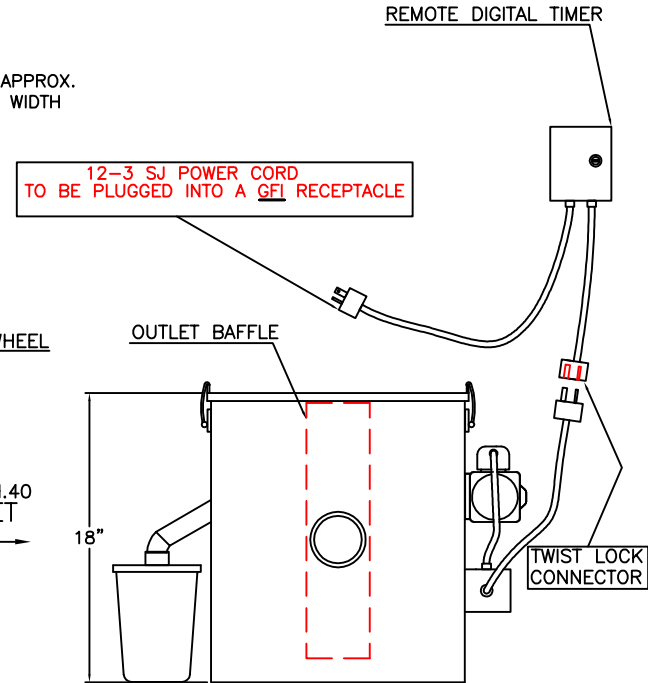
ELECTRICAL INFORMATION

UNIT MUST BE PLUGGED INTO
 A GFI(GROUND FAULT INTERRUPT)RECEPTACLE.

GEARMOTOR- .933 FLA. 115V, 60hz

ELECTRIC HEATING ELEMENT- 115 V, 1500 W

NOTE:
 THE GREASE STOPPER IS NOT A TRAP FOR SEWER GAS WE
 SUGGEST A TRAP DOWN STREAM FROM THE GREASE STOPPER.



LEFT TO RIGHT FLOW

REVISIONS



Highland Tank

GREASE STOPPER MODEL 25

L-R

CUSTOMER:

PROJECT:

QUOTE NO:

SCALE:	DATE:	DWG. BY:	CHK'D BY:	DWG. NO.:
1-1/2"=1'-0"	11/28/06	CLD		GS25L-R